



Photo Courtesy of Paul McKenzie

# Jaankari Patr: Alag alag prajati ki Grouper (Kawakawa) tatha Coral Trout (Donu) par pratibandh



Pehli taarikh June se lekar Sitambar tees tak, Fijian Sarkar ne sabhi prakaar ke Grouper (kawakawa) tatha Coral Trout (donu) ki utpati, bikri, kharidbeen, kabza aur niryaat par pratibandh laga di hai. In prakaar ki machliyon ki sankhya tezi se ghatne ke kaaran, aisa kiya jaa raha hai.

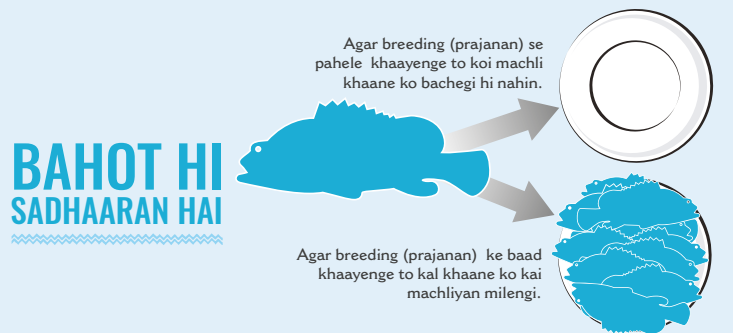
Is chaar mahine ke pratibandh ke dauraan, agar kisi bhi vyapari ko kawakawa tatha donu prakaar ki machliyon ki utpati, bikri, kharidbeen, kabza tatha niryaat karte huwe pakdha gaya, to un machliyon ko zabt kar liya jayega aur vyaapari par bhaari jurmana bhi lagaya jayega.

- Ek vyakti ko \$10,000 (das hazaar) se \$50,000 (pachaas hazaar) tak jurmana bharna padh sakta hai.
- Vyapario ko \$20,000 (bees hazaar) se \$100,000 (ek laakh) tak jurmana bharna padh sakta hai.

Jurmane ki rakam, apraadh ki sangheenta ko dekh kar, Fiji Court System ke dwara nirdharit kiya jayega.

## Pratibandh Ki Zaroorat Kyun Hai?

Aamtaur par, in satais prajati ke kawakawa aur donu machliyan ko angrezi me "grouper" kehlaya jaata hain. Fiji ke alag alag praanth tatha boli (yaane dialect) me yeh satais prajati ki machliyaan vibhinn naamon se bhi jaane jaate hain. Naam chahe koi ho, yeh machliyan ucch koti, yaane A-Grade machliyan hain, jinpar kai Fijians apna bhojan tatha aamdani ke liye nirbhar karte hain. Agar abhi se koi prabandh nahin kiya gaya to in machliyon ki abaadi mein girawat ho sakti hain. Is pratibandh ke zariye in prajati ki machliyon ko har saal saphaltapurwak breed karne ka mauka diya jayega, taaki inke stocks me dobara badhanti ho. Agar in machliyon ko salana breed karne ka mauka diya gaya to inki abaadi mein vridhi dekhi jaa sakti hai.



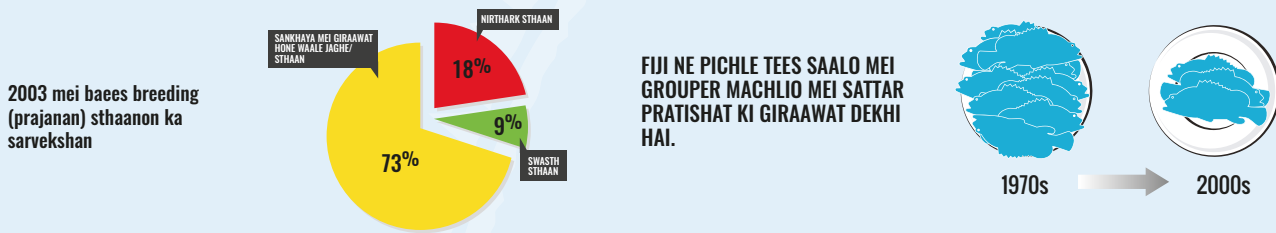
Agar breeding (prajanan) ke baad khaayenge to kal khaane ko kai machliyan milengi.

# Kawakawa aur Donu par 4 mahino ki prathibandh ke bare mei aksar pucho jane wale prashna

## Sirf In Machliyon Par Pratibandh Kyon?

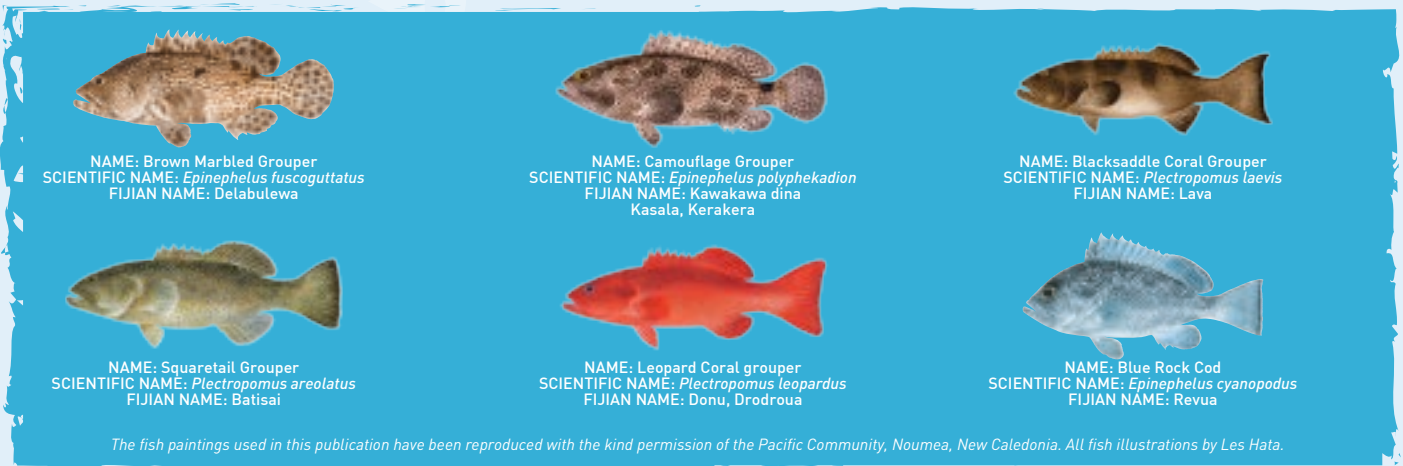
Kawakawa aur donu ke satais prajati yaane 27 species ki machliyan har saal bhaari matra mei ek hi sthaan par breed karte hai. Inn breeding (prajanan) waale jagahon par paramparik roop se machli pakdha jata tha lekin Fiji ki abaadi mei vridhi ke karan inn sthano se bhari matra mei machli pakdhe jaane lage. Iss karan se Fiji ke machli adhaar ko puna badhaane me kathinai hone lagi hai.

Ministry of Fisheries ke anusaar, Fiji ke kawakawa aur donu ke breeding (prajanan) waale jagahon mei 80% (assi pratishat) ki girawat hui hai yah toh weh puri tarha se khatm hone lagi hai. Ek adhyann mei paya gaya hai ki, 30 years (tees salo) mei na sirf pakadhi gayi machli mei kawakawa ki matra mein 70% (sattar pratishat) ki kami hui hai, balki Fiji mei kai sthano par yeh machliya milti hi nahin hain. Machwaro ka bhi yahi kahena hai ki ab machli pakadhe waale sthano par kawakawa ka milna bahut mushkil ho gaya hain. Ab yeh ucch koti ki machliyan bahut hi chintajanak gati se kam hoti jaa rahin hain.



## Kin Prakaar ki Machliyon par Paabandhi Hai?

Sabhi prakaar ke kawakawa (grouper) tatha donu (coral trout) ki utpati, bikri, kharidbeen, kabza aur niryat par pratibandh hai. Aamtaur par pakdhe jaane wale cheh prakaar ke kawakawa aur donu hai:



Kyonki Fiji me kai alag alag boli, yaane ki dialects hain, in machliyon ko kai alag alag naam se bulaya jaata hain. Kripya saath me pradaan kiye gaye Kawakawa aur Donu Fish Buyers Guide aur Fish Poster (Machwaro ke liye pradaan ki gai jaankari patr tatha ishtahaar) zarur dekhe aur in machliyon ke satta is prajati ki tasveere aur inke jaane mane naam se apne aap ko parichit kare.

## Pratibandh ko kab lagoo kiya gaya hain?

June 2017 me Fijian Sarkar ne sabhi prakaar ke kawakawa aur donu ki utpati, bikri, kharidbeen, kabza aur niryat par samaayik yaane seasonal pratibandh lagane ki ghoshna, United Nations Oceans Conference ke dauraan kiya. Fiji mein 2017 se pehle, lagataar samaajik ghoshnaon ke baad is pratibandh ko aupchaarik roop se, Offshores Fisheries Management Regulation ke tahet, June 2018 mein lagu kiya gaya tha.

# Kawakawa aur Donu par 4 mahino ki prathibandh ke bare mei aksar pucho jane wale prashna

Kripya dhyaan rahe ki pratibandh ke mahino mein, jo June 1 se lekar September 30 tak hai, kawakawa aur donu ki utpati, bikri, kharidbeen, kabza aur niryat ko ekdum rok dena chahiye. Public Notice ke anusaar logo ko gyarah (11) June tak maholat diya gaya ki we tab tak pakdhe huwe sabhi machliyon ko bech de. Is maholat ki taareek ke baad, tatha cheh (6) June se pehle pakdhe huwe machliyon ko, taul kar barf me jama kar, label kare aur rakh de. Yeh machliya sirf 30 (tees) September ke baad hi bechi jaa sakti hain. Machli bechne waale vyapaario ko bachi huwi machliyon ke baare mein Ministry ko likhit roop me suchit karna chahiye, tatha Ministry dwara in machliyon ke nirakshan ke liye taiyaar rehna chahiye.

## Ministry Of Fisheries Ne Kis Tarah Se In Machliyon Par Pratibandh Lagaya?

Offshore Fisheries Management Regulations 2014 (OFMR) ke Regulation 4 ke tahat, Ministry of Fisheries ko adhikaar hai ki weh zarurat padhne par, sabhi Fiji naagrik ke rozgaar tatha ahaar suraksha ke liye prajati tatha samaayik pratibandh laga sake. Offshore Fisheries Management Act, jiske tahat OFMR abhinit hain, ko yeh adhikaar bhi hai ki weh kisi bhi vyakti ya sanstha ko zabt kar sake ya unpar jurmana laga sake.

## Yeh Pratibandh Kitne Dino Ka Hain?

Kawakawa aur Donu adhikam June se September mahine me utpann hote hain. Is kaaran se har saal yeh pratibandh pehli taarik June se lekar pehli taarik September tak lagoo kiya jata hain, taaki in machliyon ko aur sankhya me utpann hone ka mauka mile aur weh hamare shail mitti yaane reef ko puna bhar sake. Yeh pratibandh us ek sau raat ke 'tabu' se kuch zyaada hain, jo Fiji ke kisi pramukh mukhiya ke guzar jaane par lagaya jata hai.

## Kya Main Pratibandh Ke Dauran Kawakawa aur Donu Khaane Ke Liye Pakadh Sakta Hun?

Ji nahi. Yeh pratibandh in machliyon ke utpati, bikri, kharidbeen, kabza aur niryat par lagoo hain. Ministry of Fisheries ka khaas lakshya pratibandh ke mahine me kawakawa aur donu ke utpati aur vyapaarik bikri ko rokna hain, lekin yeh pratibandh har tarah ke machli pakadhne par bhi hai. Isiliye Ministry of Fisheries SABHI machwaaro ko is pratibandh ka paalan karne ke liye uttejit karte hain.

## Kya Hoga Agar Maine Yeh Machliyan Galti Se Pakadh Liya?

Galati se pakadhne par kawakawa aur donu ko wapas paani mei chodh deni chahiye. Agar iss machli ko breed karne diya gaya toh aage chal kar iss ek machli ke karan kai aur machliyan mill sakta hai.

In machliyon ki abaadi me girawat isliye hoti hain, kyoki machware jaan-boojh kar inhi ke breeding sites (prajanan sthaanon) se machli pakarte hai.. Aam taur par machware ko yeh pata hota hain ki breeding sites yaani prajanan waale sthaan kaha kaha hai. Is bina par weh in jagahon se machli pakadhne se apne aap ko rok sakte hain. Saadharan si baat hain ki jab aapko pata hain ki breeding sites kahan hai, to wahan se machli pakadhna galti nahin kahlati aur ispar sakht roop se pratibandh hain.

Iss baat par bhi dhyaan rahe ki agar kisi ne galati se bhi kawakawa ya donu ko pakadh liya hain, toh unn machlio ko bechne ke liye unhe jurmana bharna par sakta hai.

## Kya Pratibandh Ke Dauran Hum Kawakawa aur Donu Bech Sakten Hain?

Jee nahi. Is pratibandh ke dauran, kisi tarah ki bikri, bhet tatha machliyon ka pradarshan karne par sakht manahi hain, chaahe yeh machliyan saal me kisi bhi samay pakdhe gaye ho. Ministry of Fisheries sabhi vyapariyon ko uttejit karte hain ki apne stock mein rakkhe huwe machliyon ka prabandh kar le, taaki pratibandh shuru hone ke baad unke paas yeh machliyaan naa rahe. Pratibandh ke dauran kawakawa tatha donu ko kharidna apraadh maana jayega. Agar pratibandh ke dauran kisi ko bhi in machliyon ke saath pakdha gaya, to machliyon ko zabt kar liya jaayega, tatha jiske paas machliyon ko paaya gaya hai, unpar naa sirf jurmana laagoo kiya jayega, balki unpar abhiyog bhi lagaya jaa sakta hain.

# Kawakawa aur Donu par 4 mahino ki prathibandh ke bare mei aksar pucho jane wale prashna

## Is Pratibandh Ka Kya Faeda Hai? Zyada Bhojan, Zyada Paisa?

Is pratibandh ke zariye har Fijian ke ghar par bhojan aur jebo me zyada paisa aa sakta hain. Yeh jaanna zaruri hain ki machwaro ke liye aamdani kamana kitna kathin hota jaa raha hain, kyonki Fiji mein machliyon ki sankhya kam hoti jaa rahi hain. Machware kai ghanto tak paani mein rehte hain phir bhi kam machli pakadhte hain aur usse bhi kam paisa kamate hain. Is pratibandh se hamare desh ki bahut hi bahumulya prajati ki machliyon ki abaadi badhegi, jisse hamare machware aur bhi paisa kama sakege aur apne

pariwaar ki dekh bhaal aur bhi acchi tarike se kar sakege. Is pratibandh ka yahi fayeda hain.

Bhawishya mei asha hai ki Fiji ke machwaro ko Fiji ke samudra se zyada machli mile aur weh zyada paese kamae. Iska yeh matlab hai ki unhe samajhdari se machli pakadhna hoga aur yeh dhyaan mei rakhna hoga ki har saal kawakawa aur donu ko breed karne ka mauka diya jaaye.

## Pratibandh Ko Lagoo Karna

Ministry of Fisheries gair kanooni roop se machli pakadhne par rok karne ka kaam kar raha hai. Fijian Sarkar ne ek stand-alone ministry ki sthapna ki hai jo Fiji ke samudri sansadhan, yaane marine resources ko badhaane tatha hamare desh ke ahaar suraksha aur rozgaar ki raksha karne par kaarya kar rahe hain. Iske atirikt, naye Ministry of Fisheries ne ek Inshore Fisheries Management Division ko taiyaar kiya hai, jiske zariye weh machliyon ki punji ko theek tarike se dekh bhaal kar sake aur unke anukoolta ko barkaraar rakh sake.

Kawakawa aur Donu par pratibandh laagoo karne ke liye Ministry of Fisheries ko kai saajhedaaro se jamkar sahara mila hai. Sabhi town councils, jo desh bhar ke machli bazaar ki dekhbhaal karte hain, ne Ministry of Fisheries se waada kiya hai ki weh is pratibandh ko lagoo karne me Ministry ki sahayta karege. Fiji Police Force bhi apne kai community posts ke dwara janta ko suchit karne aur is pratibandh ko lagoo karne mein sahayta pahunchayegi. Iske saath saath, Fiji Revenue and Customs Service niryatakon par pratibandh lagoo karne mein sahayta karegi tatha Fiji Navy pratibandh ke samarthan mein samudri paharedaari pradaan karegi.

## Agar Maine Kisi Ko Kawakawa Ya Donu Bechte Dekha, To Mujhe Kya Karna Chahiye?

Kawakawa aur Donu ko pakadhne par jo samayik pratibandh hain, ise safaltapurwak lagoo karne mein Ministry of Fisheries ko sabhi ki sahayta ki zarurat hai. Sabhi town councils, Fiji Police Force, Fiji Revenue and Customs Service tatha Fiji Navy is pratibandh ko lagoo karne mein sahayta pahunchane ke liye taiyaar hain. Har koi sahayta kar sakta hai, jaise machwaare, middlemen, bazaar mein bechne wale tatha upbhogta. Hum sab ko is baat ko aam karne mein madad pahunchani chahiye taaki janta ko sahi karya karne ka mauka mile.

- Nausori Fisheries Office: **3476587/9966745**
- Lami Fisheries Office: **3361122/9966752**
- Lautoka Fisheries Office: **6665899/9966759**
- Labasa Fisheries Office: **8812833/9966770**

Kahin par bhi in machliyon ko pakadhte ya bechte huwe dekhe, to fauran Ministry of Fisheries ko sampark kare:

Iske alawa, agar aapne kisi ko kawakawa aur donu ko pakadhte ya bechte dekha, to unki tasveer kheech kar hamare campaign Facebook page par share kar sakte hain ([www.facebook.com/4fjmovement](https://www.facebook.com/4fjmovement)) ya phir Ministry of Fisheries ke Facebook page ([www.facebook.com/fisheriesfiji/](https://www.facebook.com/fisheriesfiji/)) par share kar sakte hain. Kripya karke bechne waali jagah, agar ho sake to bechne waale ka naam, din aur taarikh note kare taaki Ministry of Fisheries ise document kar sake.

## Kya Logo Ko Iss Pratibandh Ke Bare Mei Pata Hai?

Ministry of Fisheries aur cChange ek outreach program ke dwara sabhi machli vyaparo se milkar unhe aane wale pratibandh ke baare mein batlayenge.

Fiji mein kai watawaran sambandhit campaigns kiye gaye hain, lekin janta tak pahunchne mein itna kaamyaab koi nahin tha.

Kai logon nei 4FJ Pledge ke zariya yeh wada kiya hai ki weh kawakawa aur donu ke breeding period (prajanan saamhe) ke daaraan inn machliyo ko nahi khaenge. 20,000 (pandrah hazaar) se bhi zyada logo ne yeh sankalp liya hai, jinmei shamil hain desh ke pradhaan mantri Hon Prime Minister Josaia Voreqe Bainimarama, vishwa prasidh rugby player Waisele Serevi aur doh supermarket chain, Max Value aur Newworld IGA.

Kai interviews aur survey se cChange ne yeh paya hai ki logo ko kawakawa aur donu ki matra mein girawat aur 4FJ campaign ke bare mein pata hai, Suva-Nausori mein jari kiya gaya ek survey se yeh bhi pata chala hai ki 93% log iss chaar mahino ki pratibandh ka samarthan karte hae.

Aur jaankari ke liye [www.4fjmovement.org](http://www.4fjmovement.org) par jaye ya Ministry of Fisheries ko call kare:

- Nausori Fisheries Office: **3476587/9966745**
- Lami Fisheries Office: **3361122/9966752**
- Lautoka Fisheries Office: **6665899/9966759**
- Labasa Fisheries Office: **8812833/9966770**